

TANGE SEIKI CO.,LTD.

1-1-26, Kurumano-cho Nishi, Sakai-ku, Sakai, Osaka, Japan 590-0940
TEL:+81-72-224-9990
FAX:+81-72-224-9991

TANGE SEIKI TAICHUNG CO.,LTD.

No.421-2 Fuya Rd., Xitun District, Taichung City 407,
Taiwan (R.O.C.)
TEL:+886-4-2463-2785
FAX:+886-4-2463-2890

TANGE SEIKI SHENZHEN CO.,LTD.

No. 141, Yin Tai Rd., Dalang St., Baoan Dist., Shenzhen,
Guangdong, China
TEL:+86-755-27742140
FAX:+86-755-27708372

European Sales and Service

ACTIVE SPORTS PRODUCTS, SL

Av. Maresme 58, 17257 Torroella de Montgrí, Spain
TEL:+34-972-75-0030
FAX:+34-972-75-2125

Japanese Sales and Service

TOKYO SAN-ESU CO.,LTD.

3-7-1, Ueno Taito-ku, Tokyo, Japan 110-0005
TEL:+81-3-3834-2041
FAX:+81-3-3836-9290



Classic

Ultimate Quality and Durability

CNC precision machined to very tight tolerances for ultimate performance and wear. A7075-T6 super light alloy with fully sealed stainless steel bearing and crown cone. Threaded and threadless models. 1" and 1-1/8" and 1-1/4". Colors: Black, Silver, Blue and Red.

Technical Specification	Size	model #	L1	L2	Stack height	Weight
Technoglide Classic	1"	TG32CL	13.0	12.0	25.0 mm	92.0 g
Technoglide Classic	1-1/8"	TG36CL	15.0	13.5	28.5 mm	97.0 g
Technoglide Classic	1-1/4"	TG40CL	15.5	14.5	30.0 mm	102.0 g
Technoglide Classic	1" threaded	TG32CLD	22.0	12.0	34.0 mm	101.0 g
Technoglide Classic	1-1/8" threaded	TG36CLD	23.3	13.5	36.8 mm	105.0 g

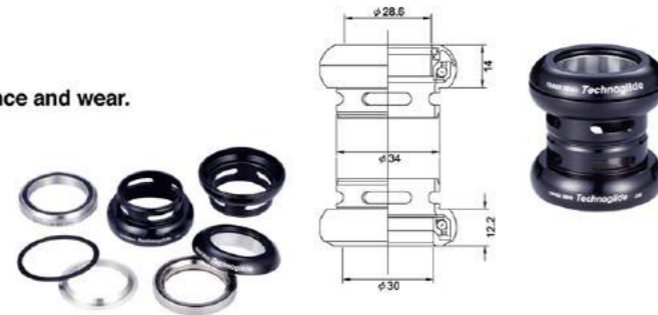


J-62

Super light weight for Road bike race

CNC precision machined to very tight tolerances for ultimate performance and wear. Tange Seiki exclusive Super light bearing 7G on upper unit. Tange Seiki exclusive EZ system on upper unit.

Technical Specification	Size	model #	L1	L2	Stack height	Weight
Technoglide J-62	1-1/8"	TG36J62	14.0	12.2	26.2 mm	66.8g



J-6

Ultimate Durability and Performance

CNC precision machined to very tight tolerances for ultimate performance and wear. A7075-T6 super light alloy with fully sealed stainless steel bearing and crown cone. Tange Seiki exclusive EZ system on upper unit.

Technical Specification	Size	model #	L1	L2	Stack height	Weight
Technoglide J-6	1"	TG32J6	14.5	12.5	27.0 mm	107.0 g
Technoglide J-6	1-1/8"	TG36J6	16.5	14.0	30.5 mm	112.0 g



J-2

Quality and performance

CNC precision machined light alloy with Tange Seiki 4T5 fully sealed cartridge bearing. Tange Seiki exclusive EZ system on upper unit.

Technical Specification	Size	model #	L1	L2	Stack height	Weight
Technoglide J-2	1"	TG32J2	13.5	11.5	25.0 mm	72.0 g
Technoglide J-2	1-1/8"	TG36J2	14.0	11.5	25.5 mm	88.5 g



DH

Ultimate Durability and Performance

CNC precision machined Heat-treated stainless steel cups and crown race. Tange Seiki Technoglide stainless steel, fully sealed bearings. Tange Seiki exclusive EZ system on upper unit.

Technical Specification	Size	model #	L1	L2	Stack height	Weight
Technoglide DH	1-1/8"	TG36DH	16.5	14.0	30.5 mm	190.5 g



FSD

Big Hit Cr-Mo Strength headset

Heat-treated Cr-Mo Upper/ lower cups and crown race. Oversized cartridge bearing on lower unit for increased durability and bigger hits. Standard size cartridge bearing on upper unit for weight savings. Tange Seiki exclusive EZ system on upper unit.

Technical Specification	Size	model #	L1	L2	Stack height	Weight
Technoglide FSD	1-1/8"	TG36FSD	17.0	15.6	32.5 mm	192.5 g



DL

The traditional lightest model

Lightweight and strong duraluminum alloy construction. Heat-treated Cr-Mo ball races. Three sizes available: 1", 1-1/8" and 1-1/4"

Technical Specification	Size	model #	L1	L2	Stack height	Weight
Technoglide DL	1"	TG32DL	13.2	11.7	24.9 mm	74.0 g
Technoglide DL	1-1/8"	TG36DL	14.8	11.6	26.4 mm	95.0 g
Technoglide DL	1-1/4"	TG40DL	17.4	11.6	29.0 mm	116.0 g



RDC

Cartridge Bearing Type

Lightweight and strong duraluminum alloy construction. Tange Seiki original sized 4T5 Cartridge Bearing. Fully Sealed Mechanism. Color variation: Silver, Black, Blue, Red, Gold, Green and etc..

Technical Specification	Size	model #	L1	L2	Stack Height	Weight
Technoglide RDC	1"	TG32RDC	13.8	11.5	25.3 mm	72.0 g
Technoglide RDC	1-1/8"	TG36RDC	14.0	12.2	26.2 mm	81.0 g

RDC options



J-27

Cartridge Bearing Type

Lightweight and strong duraluminum alloy construction. Tange Seiki original sized 4T5 Cartridge Bearing. Fully Sealed Mechanism. Color variation: Silver, Black, Blue, Red, Gold, Green and etc..

Technical Specification	Size	model #	L1	L2	Stack height	Weight
Technoglide J-27	1-1/8"	TG36J27	13.8	11.5	25.3 mm	81.0 g

J-27 options



LAV92

Cartridge Bearing Type

Lightweight and strong duraluminum alloy construction. Tange Seiki original sized 4T5 Cartridge Bearing. Fully Sealed Mechanism.

Technical Specification	Size	model #	L1	L2	Stack height	Weight
Technoglide LAV92	1-1/8"	TG36LAV92	15.0	12.4	27.4 mm	89 g



EZ2

Tange Seiki patented EZ system

Tange seiki exclusive designed EZ system on upper/ lower unit.
Lightweight and strong duraluminum alloy construction.
Tange Seiki original sized cartridge bearing.

Technical Specification	Size	Model #	L1	L2	Stack Height	Weight
Technoglide EZ2	1-1/8"	TG36EZ2	16.5	11.7	28.8 mm	91.0 g



1.5CB

Ride Large

Lightweight and strong duraluminum alloy construction
One point five size for the Most Extreme riders.
Tange Seiki specially designed 1.5" cartridge bearings.
Fully Sealed mechanism.

Technical Specification	Size	model #	L1	L2	Stack Height	Weight
Technoglide 1.5CB	1-1/2"	TG46CB	15.0	14.5	29.5 mm	200.0 g



ZSR

OnePointFive Zero Stack for 1-1/8" fork

Fits OnePointFive size headtubes and 1-1/8" forks with ZS design.
Lightweight and strong duraluminum alloy construction
Tange Seiki original sized 4T5 Cartridge Bearing
Fully Sealed Mechanism

Technical Specification	Size	Model #	L1	L2	Stack Height	Weight
Technoglide ZSR	1.5" Headtube/ 1-1/8" Steerer	TG1.5ZSR	7.1	2.0	9.1 mm	156.0 g



EZS

Tange Seiki patented EZ system on ZS headset

The Tange Seiki EZ system combines all assembly parts into two pre-assembled units.
Always correctly assembled. EZ to install.
The EZS Zero Stack is made of lightweight strong duraluminum alloy construction.
Tange Seiki specially designed EZ cartridge bearings.
Fully Sealed Mechanism

Technical Specification	Size	model #	L1	L2	Stack height	Weight
Technoglide EZS	1-1/8"	TG36EZS	9.7	2.5	12.2 mm	95.0 g



ZSI-47

Zero Stack and Fully Integrated in One

The New ZSI combines the best of the Zero Stack system with the fully integrated system by combining the cup with the cartridge bearing. Gives you the sleek, clean look and weight savings of the integrated system with the protection of the Zero Stack system.
Fits 41 mm x 47 mm head tubes.

Lightweight and strong duraluminum alloy construction
Tange Seiki exclusive EZ system on upper unit.
Tange Seiki specially designed ZSI adapter cups.

Technical Specification	Size	model #	L1	L2	Stack height	Weight
Technoglide ZSI-47	1-1/8"	TG36ZSI47	6.7	0.5	7.2 mm	63.0 g



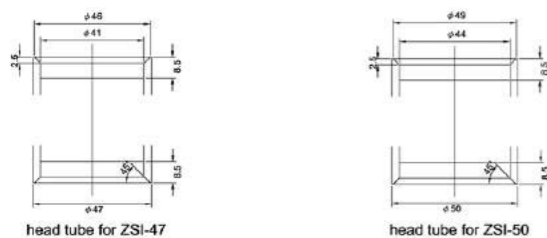
ZSI-50

Fits Current 1-1/8" Zero Stack system but without the cups

The same features as the ZSI-47 headset but designed to fit frames using the current 1-1/8" Zero Stack headsets.
Fits 44 mm x 50 mm head tubes.

Lightweight and strong duraluminum alloy construction
Tange Seiki exclusive EZ system on upper unit.
Tange Seiki specially designed ZSI-50 adapter cups.

Technical Specification	Size	model #	L1	L2	Stack height	Weight
Technoglide ZSI-50	1-1/8"	TG36ZSI50	6.8	0.5	7.3 mm	95.0 g



ZS22

Zero Stack system

Lightweight and strong duraluminum alloy construction
Tange Seiki original sized 4T5 Cartridge Bearing
Fully Sealed Mechanism

Technical Specification	Size	model #	L1	L2	Stack height	Weight
Technoglide ZS22	1"	TG32ZS2	11.0	2.0	13.0 mm	75.0 g
Technoglide ZS22	1-1/8"	TG36ZS2	11.3	2.2	13.5 mm	84.0 g



ZS22 options



ZS225

Zero Stack system on tapered head tube

Lightweight and strong duraluminum alloy construction
Tange Seiki original sized 4T5 Cartridge Bearing upper
Tange Seiki original sized 1.5" Cartridge Bearing upper
Fully Sealed Mechanism

Technical Specification	Size	model #	L1	L2	Stack height	Weight
Technoglide ZS225	1-1/8"/ 1-1/2"	TGZS225	15.0	2.4	17.4 mm	116.0 g



ZS225 options

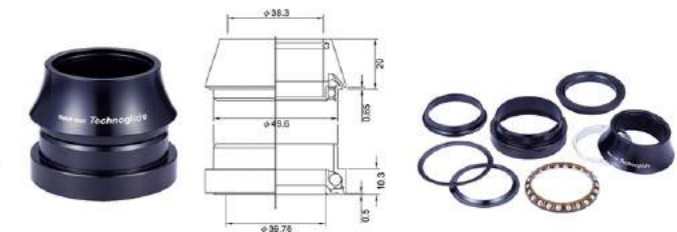


ZSX25 (ZSCB)

1.5" Zero Stack system

Lightweight and strong duraluminum alloy construction
Tange Seiki original designed 1.5" semi-integrated bearing unit upper
Tange Seiki original designed 1.5" Bearing unit lower
Fully Sealed Mechanism

Technical Specification	Size	model #	L1	L2	Stack height	Weight
Technoglide ZSX25	1-1/2"	TGZSX25	16.0	10.3	16.3 mm	137.0 g



ZSX25 options



IS22

Fully Integrated System

Lightweight and strong duraluminum alloy construction
Tange Seiki original sized 4T5 Cartridge Bearing
Inner adapter rings to avoid headtube deformation. (option)

Technical Specification	Size	model #	L1	L2	Stack height	Weight
Technoglide IS22	1"	TG32IS2	10.0	0.5	10.5 mm	54.0 g
Technoglide IS22	1-1/8"	TG36IS2	10.0	0.5	10.5 mm	62.0 g

IS22 options

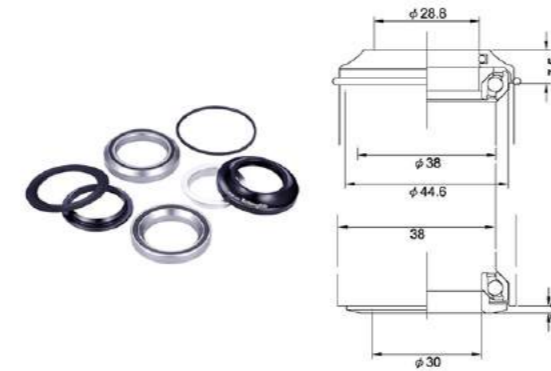


IS23

Fully Integrated System

Lightweight and strong duraluminum alloy construction
Larger sized Cartridge Bearings for durability
Fully Sealed Mechanism

Technical Specification	Size	model #	L1	L2	Stack height	Weight
Technoglide IS23	1-1/8"	TG36IS23	7.5	2.0	9.5 mm	75.0 g



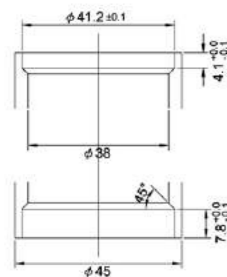
IS24

Fully Integrated system

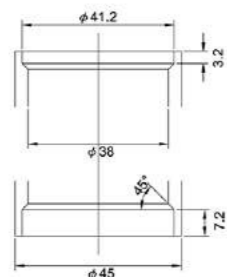
Lightweight and strong duraluminum alloy construction
Campy Size Cartridge Bearing for durability
Fully Sealed Mechanism

Technical Specification	Size	model #	L1	L2	Stack height	Weight
Technoglide IS24	1-1/8"	TG36IS24	7.5	0.6	8.1 mm	69.5 g

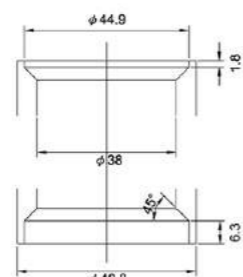
IS24 options



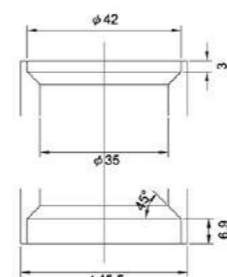
IS22 w/adapter ring



IS22 head tube w/o/adapter



Head tube IS23



Head tube IS24

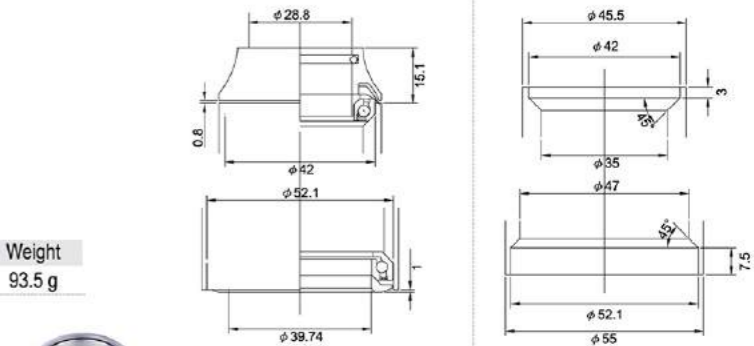
IS245

Fully Integrated System

Lightweight and strong duraluminum alloy construction
Tange Seiki original sized 4T5 Cartridge Bearing upper
Tange Seiki original sized 4T5 1.5" sized Cartridge Bearing lower
Fully Sealed Mechanism

Technical Specification	Size	model #	L1	L2	Stack height	Weight
Technoglide IS245	1-1/8" / 1-1/2"	TGIS245	15.1	1.0	16.1 mm	93.5 g

IS245 options



Head tube IS245

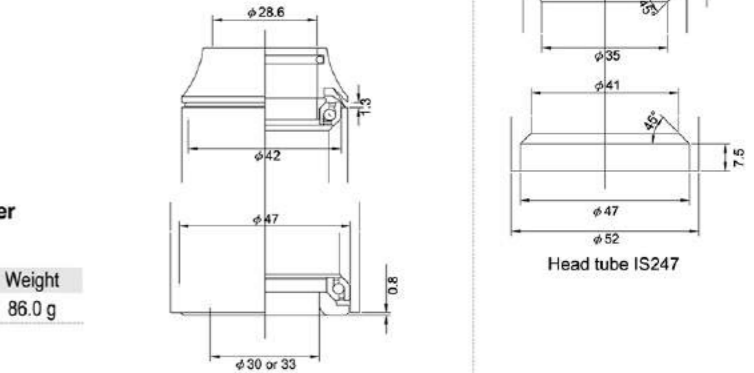
IS247

Fully Integrated System

Lightweight and strong duraluminum alloy construction
Tange Seiki original sized 4T5 Cartridge Bearing upper
Tange Seiki original sized 4T5 1-1/4" sized Cartridge Bearing lower
Fully Sealed Mechanism

Technical Specification	Size	model #	L1	L2	Stack height	Weight
Technoglide IS247	1-1/8" / 1-1/4"	TGIS247	10.5	0.8	11.3 mm	86.0 g

IS247 options



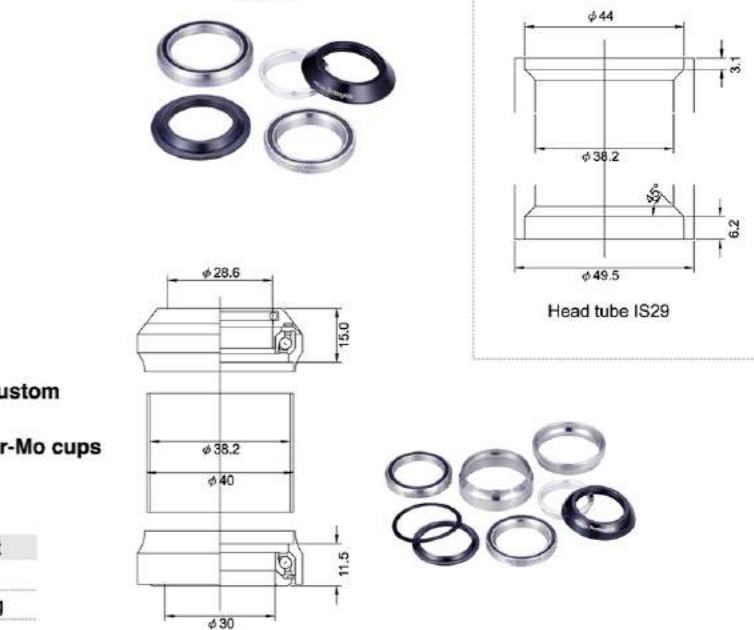
Head tube IS247

IS27

Integrated Headset for Cr-Mo headtube

Integrated headset specifically designed for use in Cr-Mo frames
Eliminates the need to have the head tube machined allows for custom height to be determined by the frame builder.
CNC Machined light alloy top cover and compression ring, and Cr-Mo cups
Tange Seiki original sized 4T5 Cartridge Bearing
Fully Sealed Mechanism

Technical Specification	Size	model #	L1	L2	Stack height	Weight
Technoglide IS27	1"	TG32IS27	14.3	12.2	26.5 mm	85.0 g
Technoglide IS27	1-1/8"	TG36IS27	15.0	11.5	26.5 mm	100.0 g



Head tube IS29

IS29

Fully Integrated System

Lightweight and strong duraluminum alloy construction
Larger sized Cartridge bearing for durability.
Tange Seiki exclusive designed EZ system on upper unit
Fully Sealed Mechanism

Technical Specification	Size	model #	L1	L2	Stack height	Weight
Technoglide IS29	1-1/8"	TG36IS29	8.4	0.4	8.9 mm	81.0 g





STR

Reversible Type headset

High-tension steel
Fully Sealed Mechanism

Technical Specification	Size	model #	L1	L2	Stack height	Weight
Terious STR	1"	TE32STR	12.3	11.3	23.6 mm	110.0 g
Terious STR	1-1/8"	TE36STR	12.1	11.3	23.4 mm	124.0 g



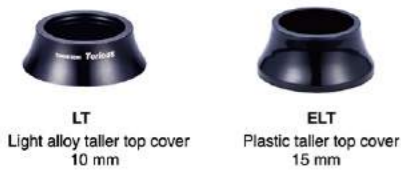
TG8

Perfect fitting with Light Alloy headtube

High-tension steel
Fully Sealed Mechanism

Technical Specification	Size	model #	L1	L2	Stack height	Weight
Terious TG8	1-1/8"	TE36TG8	13.8	12.4	26.2 mm	121.0 g

TG8 options



SRN

Needle Roller Bearing System

High-tension steel
Fully Sealed Mechanism
Ball retainer on upper unit for weight saving

Technical Specification	Size	model #	L1	L2	Stack height	Weight
Terious SRN	1-1/8"	TE36SRN	13.8	13.0	26.8 mm	113.0 g



DX4

Lightweight and strong duraluminum light alloy construction
Fully Sealed Mechanism

Technical Specification	Size	model #	L1	L2	Stack height	Weight
Terious DX4	1-1/8"	TE36DX4	13.9	11.6	25.5 mm	100.0 g



ST6

High-tension steel
Sealed Mechanism

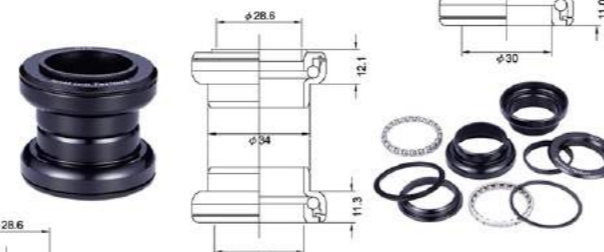
Technical Specification	Size	model #	L1	L2	Stack height	Weight
Terious ST6	1-1/8"	TE36ST6	13.5	11.0	24.5 mm	110.0 g



TG4

High-tension steel
Sealed Mechanism

Technical Specification	Size	model #	L1	L2	Stack height	Weight
Terious TG4	1-1/8"	TE36TG4	12.1	11.3	23.4 mm	120.0 g



ER

Reversible Type headset

High-tension steel
Sealed Mechanism

Technical Specification	Size	model #	L1	L2	Stack height	Weight
Terious ER	1-1/8"	TE36ER	13.5	12.5	26.0 mm	105.0 g

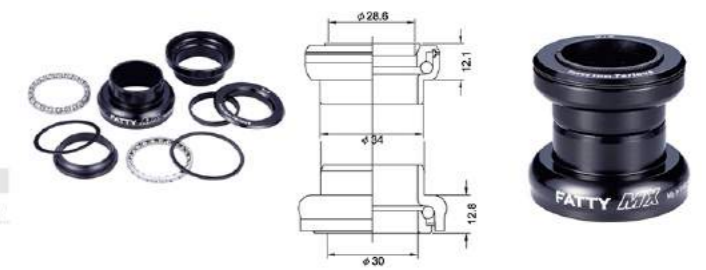


Fatty MX2

Durable for hard jumper

Fatty wall-thickness Chromoly lower cup
Fully Sealed Mechanism

Technical Specification	Size	model #	L1	L2	Stack height	Weight
Terious Fatty MX2	1-1/8"	TE36FMX	12.1	12.8	24.9 mm	160.0 g



Thunder

Super Strong and Durable for hard jumper

Fatty wall-thickness Chromoly lower cup
Bigger sized balls on lower unit for more durable
Fully Sealed Mechanism

Technical Specification	Size	model #	L1	L2	Stack height	Weight
Terious Thunder	1-1/8"	TE36THR	12.1	14.0	26.1 mm	155.0 g



1.5BR

OnePointFive

CNC Machined light alloy top cover and compression ring
High-tension steel upper/lower cups
Fully Sealed Mechanism

Technical Specification	Size	model #	L1	L2	Stack height	Weight
Terious 1.5BR	1-1/2"	TE1.5BR	18.0	11.0	29.0 mm	320.0 g



ZSR-BR

OnePointFive Zero Stack for 1-1/8" forks

High-tension steel
Ball retainer Type 1.5" to 1-1/8" reducer headset system
Fully Sealed Mechanism

Technical Specification	Size	model #	L1	L2	Stack height	Weight
Terious ZSR-BR	1.5"headtube/ 1-1/8"Steerer	TE1.5ZSR-BR	7.1	1.8	8.9 mm	166.0 g

ZSR-BR option



LAV-87

Lightweight and Durable

CNC machined light alloy top cover, upper and lower cups.
Oversized cartridge bearing on lower unit for increased durability and bigger hits.
Standard size cartridge bearing on upper unit for weight savings.

Technical Specification	Size	model #	L1	L2	Stack height	Weight
Technoglide LAV-87	1-1/8"	TG36LAV87	14.7	13.7	28.4 mm	160.0 g



ZSTQ

High-tension steel
Semi-cartridge type semi-integrated headset system
Fully Sealed Mechanism
ZSTQ-LT: Light alloy longer top cover
Color variation: Silver, Black, Blue, Red, Gold, Green and etc. as option

Technical Specification	Size	model #	L1	L2	Stack height	Weight
Terious ZSTQ	1-1/8"	TE36ZSTQ	6.7	3.3	10.0 mm	124.0 g



ZST2

High-tension steel
Ball retainer type semi-integrated headset system
Fully Sealed Mechanism
ZST2-LT: Light alloy longer top cover
Color variation: Silver, Black, Blue, Red, Gold, Green and etc. as option

Technical Specification	Size	model #	L1	L2	Stack height	Weight
Terious ZST2	1"	TE32ZST2	6.0	3.5	9.5 mm	94.0 g
Terious ZST2	1-1/8"	TE36ZST2	8.1	3.4	11.5 mm	113.0 g



ZSTE

Reversible type
High-tension steel
Ball retainer type
ZSTE-LT: Light alloy longer top cover
Color variation: Silver, Black, Blue, Red, Gold, Green and etc. as option
ZSTEP-15: 15mm Plastic longer top cover as option

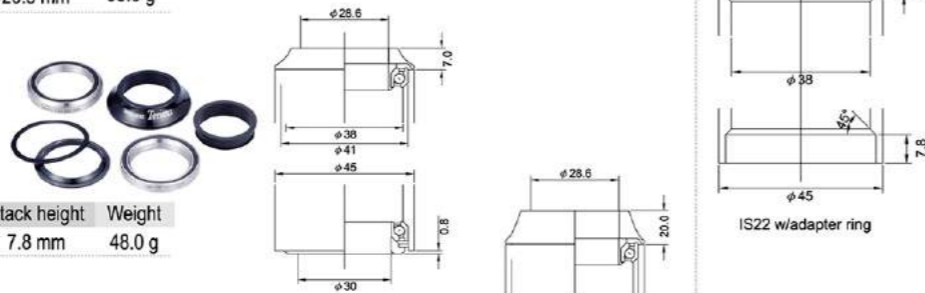
Technical Specification	Size	model #	L1	L2	Stack height	Weight
Terious ZSTE	1-1/8"	TE36ZSTE	5.1	4.3	9.4 mm	101.0 g
Terious ZSTEP-15	1-1/8"	TE36ZSTEP	16.0	4.3	20.3 mm	95.0 g



IS22E

High Impact Resin top cover
Pre-assembled Compression ring (Pat.P)
Tange Seiki original sized 4T5 Cartridge Bearing

Technical Specification	Size	model #	L1	L2	Stack height	Weight
Terious IS22E	1-1/8"	TE36IS22E	7.0	0.8	7.8 mm	48.0 g



IS22ELT

The same features as the IS22E but has taller High Impact Resin top cover

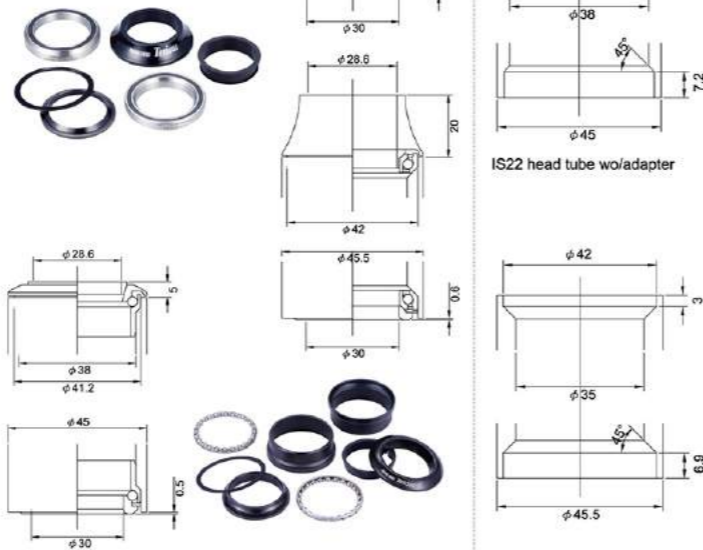
Technical Specification	Size	model #	L1	L2	Stack height	Weight
Terious IS22ELT	1-1/8"	TE36IS22ELT	10.0	0.8	10.8 mm	55.0 g
Terious IS22ELT	1-1/8"	TE36IS22ELT	20.0	0.8	20.8 mm	55.0 g



IS24ELT

High Impact Resin tall top cover
Campy size Cartridge Bearing for durability
Sealed Mechanism

Technical Specification	Size	model #	L1	L2	Stack height	Weight
Terious IS24ELT	1-1/8"	TE36IS24ELT	10.0	0.6	10.6 mm	72.0 g
Terious IS24ELT	1-1/8"	TE36IS24ELT	20.0	0.6	20.6 mm	72.0 g



IST

High-tension steel
Ball retainer type

Technical Specification	Size	model #	L1	L2	Stack height	Weight
Terious IST	1-1/8"	TE36IST	5.0	0.5	5.5 mm	92.0 g

Vantage ZSLT

Light alloy conical top cover covers lock nut assembly
Lightweight and strong duraluminum alloy construction
Tange Seiki Original 4T5 Cartridge Bearing
Fully Sealed Mechanism

Technical Specification	Size	model #	L1	L2	Stack height	Weight
Vantage ZSLT	1"	VZSLT21	25.0	2.2	27.2 mm	98.0 g
Vantage ZSLT	1-1/8"	VZSLT81	25.0	2.2	27.2 mm	130.0 g



Vantage ZS

Lightweight and strong duraluminum alloy construction
Tange Seiki Original 4T5 Cartridge Bearing
Fully Sealed Mechanism

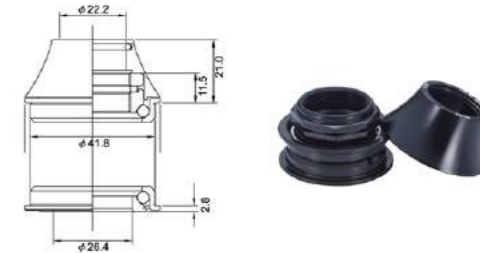
Technical Specification	Size	model #	L1	L2	Stack height	Weight
Vantage ZS	1"	VZS21	12.0	2.2	14.2 mm	82.0 g
Vantage ZS	1-1/8"	VZS81	14.4	2.2	16.6 mm	98.0 g



Vantage ZSELT

High Impact Resin conical top cover covers lock nut assembly
High-tension steel cups and ball retainers
Fully Sealed Mechanism

Technical Specification	Size	model #	L1	L2	Stack height	Weight
Vantage ZSELT	1-1/8"	VZSELT-81	11.5	2.8	14.3 mm	108.0 g



Vantage IS24LT

Light alloy tall conical top cover covers lock nut assembly
Lightweight and strong duraluminum alloy construction
"Campy" size Cartridge Bearing for durability
Fully Sealed Mechanism

Technical Specification	Size	model #	L1	L2	Stack height	Weight
Vantage IS24LT	1-1/8"	VISLT-81	11.1	0.5	11.6 mm	80.5 g



Vantage IS29

Lightweight and strong duraluminum alloy construction
Larger size Cartridge Bearing for durability
Fully Sealed Mechanism

Technical Specification	Size	model #	L1	L2	Stack height	Weight
Vantage IS29	1-1/8"	VIS29-81	27.5	0.4	27.9 mm	85.5 g



Vantage DL

CNC Machined A7075-T6 Light Alloy
Lightweight and strong duraluminum alloy construction
Heat-treated Cr-Mo ball races
Triple Sealed Mechanism

Technical Specification	Size	model #	L1	L2	Stack height	Weight
Vantage DL	1"	VR-254	21.3	11.5	32.8 mm	90.0 g
Vantage DL	1-1/8"	VR-286	21.7	11.5	33.2 mm	98.0 g
Vantage DL	1-1/4"	VR-318	23.0	11.6	34.6 mm	103.0 g



Vantage

NJS approved model
CNC Machined A7075-T6 Light Alloy
Lightweight and strong duraluminum alloy construction
Heat-treated Cr-Mo ball races
Triple Sealed Mechanism

Technical Specification	Size	model #	L1	L2	Stack height	Weight
Vantage	1"	AV-505	21.6	11.5	33.1 mm	95.5 g

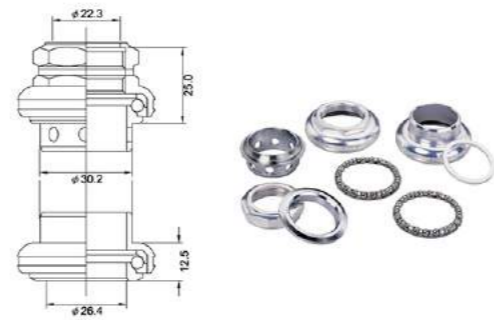


LEVIN Alloy 1500

NJS approved model

Lightweight and strong duraluminum alloy construction
Heat-treated Cr-Mo ball races
Super Stone Polish on every ball races
Drilled non-structural areas for reduced weight
Fully Sealed Mechanism

Technical Specification	Size	model #	L1	L2	Stack height	Weight
LEVIN Alloy 1500	1"	LV-1500	25.0	12.5	37.5 mm	121.0 g



LEVIN

NJS approved model

Tange Seiki Traditional Headset
CNC Machined Fully Cr-Mo construction
Super Stone Polish on every ball races

Technical Specification	Size	model #	L1	L2	Stack height	Weight
LEVIN	1"	LV-11	25.5	12.4	38.2 mm	155.0 g



LEVIN-CDS

NJS approved model

CNC Machined Fully Cr-Mo construction
Super Stone Polish on every ball races
Fully Sealed Mechanism

Technical Specification	Size	model #	L1	L2	Stack height	Weight
LEVIN-CDS	1"	LV-CDS	22.1	11.2	33.3 mm	145.0 g



Falcon FL270C

Cartridge Bearing System

Lightweight and strong duraluminum alloy construction
Tange Seiki Original sized 4T5 Cartridge Bearings
Fully Sealed Mechanism

Technical Specification	Size	model #	L1	L2	Stack height	Weight
Falcon	1-1/8"	FL270C	23.0	11.5	34.5 mm	95.0 g



Falcon FL250C

Cartridge Bearing System

Lightweight and strong duraluminum alloy construction
Tange Seiki Original sized 4T5 Cartridge Bearings
Fully Sealed Mechanism

Technical Specification	Size	model #	L1	L2	Stack height	Weight
Falcon	1"	FL250C	24.0	11.3	35.3 mm	93.0 g



Passage DX

Lightweight and strong duraluminum alloy construction
Heat-treated High-tension steel ball races
Triple Sealed Mechanism

Technical Specification	Size	model #	L1	L2	Stack height	Weight
Passage DX	1"	PA32DX	23.0	12.1	35.1 mm	108.0 g
Passage DX	1-1/8"	PA36DX	22.0	12.4	34.4 mm	115.0 g



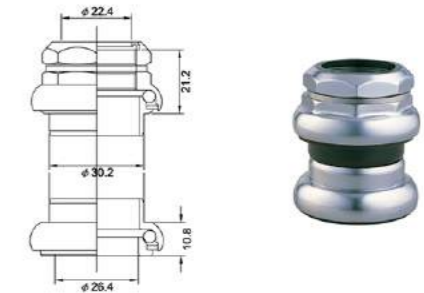
Passage

High-tension steel

Triple Sealed Mechanism

C.P., Black EDP, Satin Finish available

Technical Specification	Size	model #	L1	L2	Stack height	Weight
Passage	1"	PA32ST	20.3	10.3	30.3 mm	156.0 g
Passage	1-1/8"	PA36ST	21.2	10.8	32.0 mm	175.0 g



FS

High-tension steel

Colorful steel cover and plastic cover

Black and white painted color available

Technical Specification	Size	model #	L1	L2	Stack height	Weight
FS	1"	FS	23.9	11.0	34.9 mm	145.0 g

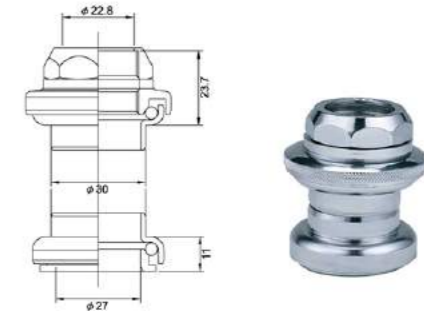


TG-235

High-tension steel

C.P., Black EDP, Satin Finish available

Technical Specification	Size	model #	L1	L2	Stack height	Weight
TG-235	1"	TG-235	23.7	11.0	32.7 mm	130.0 g



AP-2

High-tension steel

High-impact resin top cone cover

Fully Sealed Mechanism

Technical Specification	Size	model #	L1	L2	Stack height	Weight
AP-2	1-1/8"	AP-2	23.0	11.5	33.5 mm	132.0 g



RB661C

High-tension steel

Semi-cartridge type upper & lower cups

Loose-proof Mechanism

Technical Specification	Size	model #	L1	L2	Stack height	Weight
RB661C	1"	RB661C	25.4	10.2	35.6 mm	156.0 g



MX-2

Strong duraluminum Cr-Mo cups and cone
C.P., Black EDP available

Technical Specification	Size	model #	L1	L2	Stack height
MX-2	1" 32.7/26.4	MX-2	28.2	11.1	39.3 mm



AW-27

High-tension steel
C.P., Black EDP available

Technical Specification	Size	model #	L1	L2	Stack height
AW-27	1" 32.7/26.4	AW-27	27.0	11.1	38.1 mm



BB220SB

Fully CNC machined heat-treated steel cups and cones
Tange Seiki original sized Cartridge Bearings



BB220ST

High-tension steel
C.P. or UCP available



Accessories

Ball Retainers & Cartridge Bearings



Anchor Capset



Light Alloy Crown Cone



High Column Spacers

Bearing Spec

Model	Description
#300	5/32" X 20 Ball retainer for 1" sized headset
#350	5/32" X 16 Ball retainer for 1" sized headset
#375	1/4" X 11 Ball retainer for Bottom bracket set
#380	1/4" X 9 Ball retainer for Bottom bracket set
#500	3/16" X 15 Ball retainer for BMX headset
#501	3/16" X 18 Ball retainer for BMX headset
#550	5/16" X 9 Ball retainer for BMX Bottom bracket set
#551	5/15" X 12 Ball retainer for BMX Bottom bracket set
#600	1/8" X 18 Ball retainer for Vantage DL headset
#700	5/32" X 20 Ball retainer for Vantage 1" headset
#800	5/32" X 22 Ball retainer for 1-1/8" sized headset
#900	5/32" X 22 Ball retainer for 1-1/4" sized headset
#1200	Stainless steel bearing for Techno Glide headset (42x30.5x7)
#1400	Cartridge Bearing Larger size (OD=45) for headset (44.8x30.2x44.8)
#1501	Cartridge Bearing for 1" sized headset (38.13x27.2x6.3)
#1508	Cartridge Bearing for 1-1/8" sized headset (41x30.2x6.3)
#1510D	Cartridge Bearing for 1-1/8" sized headset - DOUBLE RAW(41x30.2x10.4x45D)
#1516	Cartridge Bearing for 1-1/8" sized headset (41.8x30.2x6.3x45D)
#1528	Cartridge Bearing for 1-1/8" sized headset (44.8x31.4x 6.3x45D)
#1530	Cartridge Bearing for 1-1/8" sized headset (43x30.2x7.2x45D)
#1538	Cartridge Bearing for 1-1/8" sized headset (41.9x30.2x6.3)
#1545	Cartridge Bearing for 1-1/8" sized headset (45x30.2x7.7x45D)
#1546	Cartridge Bearing for 1-1/8" sized headset (48x30.2x7.7x45D)
#1548	Cartridge Bearing for 1-1/8" sized headset (44.8x31.4x6.3mmx45D)
#1550	Cartridge Bearing for 1-1/2" sized headset(57x41x7x45D)
#1608	Cartridge Bearing for 1-1/8" sized headset (44.6x30.2x 6.7x45D)
#1652	Cartridge Bearing for 1-1/4" sized headset (46.8x34x7x45D)
#1708	Cartridge Bearing for 1-1/2" sized headset (50.8x40x7mmx45D)
#1718	Cartridge Bearing for 1-1/2" sized headset (51.8x40x8mmx45D)
#1720	Cartridge Bearing for 1-1/2" sized headset (52x40x7mmx45D)
#1728	Cartridge Bearing for 1-1/2" sized headset (52x40x8mmx45D)
#1738	Cartridge Bearing for 1.38" sized headset (49x37x7x45D)



HBRF-1001

Spoke Hole: 14Gx16H or 14Gx20H
Axle Dim: 9(ID5.2) x 100 x 108
Axle Material: AL7075-T6
Seal Bearings: 2PCS
Weight: 105g

HBRR-1001

Spoke Hole: 14Gx20H or 14Gx24H
Axle Dim: 10(ID5.2) x 130 x 140
Axle Material: AL7075-T6
Seal Bearings: 4PCS
Weight: 240g

LN-7610SP

Fully CNC machined Cr-Mo Hollow ISIS spline axle
CNC machined light alloy cups and body
108, 113 and 118 mm axle length for 68 and 73 mm shell width

LN-7922

Fully machined Cr-Mo Hollow axle
Light alloy cups and body
73mm or 68mm shell width, and every sizes axle available

LN-3922

Forged Steel Solid axle
Steel C.P. cups and body
73mm or 68mm shell width, and every sizes axle available

LN-3912

Forged Steel Solid axle
Steel Black EDP cups and body
73mm or 68mm shell width, and every sizes axle available

LEN-3912 EN standard passed

European EN Standard Passed and Certified for Strength and Durability
Forged Steel Solid axle
Steel Black EDP cups and body
73mm or 68mm shell width, and every sizes axle available

LN-3912C for Community and Electric bikes

Forged Steel Solid axle
Steel Black EDP cups and body
73mm or 68mm shell width, and every sizes axle available

LNx-7911

CNC machined light alloy cups and body
For X-type crank set, and 73mm or 68mm shell width

LN-2012 for Community bikes

Forged Steel Solid axle
High-impact resin body and steel cups
73mm or 68mm shell width, and every sizes axle available

SZ-401

High-tension steel cups
C.P., UCP or Black zink color available
Set of 6 pcs



Cartridge BB Chart

Model	BB SHELL				Length L
	D	JL	JR	CL	
	68	17	18	52	103
	68	18.5	20.5	54.5	107
	68	20.5	20.5	54.5	109
	68	22.5	20.5	54.5	111
	68	22.5	23	57	113.5
LN-9100	68	23.5	23.5	57.5	115
LN-7922	68	23	25	59	116
LN-3922	68	25	25	59	118
LN-3912	68	25	26	60	119
LN-2012	68	26	28	62	122
	68	26	29.5	63.5	123.5
	68	28.5	30.5	64.5	127
	73	16	18	54.5	107
	73	20	18	54.5	111
	73	20	20.5	57	113.5
	73	21	21	57.5	115
	73	20.5	22.5	59	116
	73	22.5	22.5	59	118
	73	23.5	25.5	62	122
	73	26	28	64.5	127

SZ-401 for Community bikes

High-tension steel cups
C.P., UCP or Black zink color available
Set of 7 pcs

